

Lote: 476

Subasta Online Lotes y Colecciones #128

**/º (1944ca). Colección de México entre 1944 y 1991, en nuevo (mayoría sin fijasellos) y usado (montado en hojas Faro, manchas del tiempo que afectan principalmente a las hojas de álbum). ALTO VALOR DE CATALOGO. A EXAMINAR.



Mexico

1944/46



W. 10

Me. 10



W
A44

Mexico

1945



LEUCHTUM

45.1

Mexico

1945



Mexico

1945



LEUCHTUM-

45.3

Mexico

1946



LEUCHTTURM

46.1

Mexico

1946



Mexico

1947



Just
6/24

Mexico

1947



Mexico

1947

Wo 11

Mo 11



Mexico

Postversicherungs-Zuschlagsmarken — Seguro Postal — Insured Letter Stamps

Ws. 10 1944/45 Ms. 10



Ws. 11 1947 Ms. 11



Zwangszuschlagsmarken — Impuesto Postal — Postal Tax Stamps

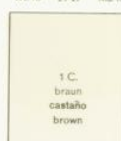
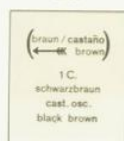
1946

Ws. 11 Ms.

1946

Ws. 10

1947 Ms. 10



1944

Ws. 10 Ms.

1947

Ws. 11 Ms.



Mexico

1950/52

W. II

Me. II



1950

1951



1951

1952



Mexico

1950/52



W. II



Me. II



Mexico

1950



1953



1953



1953



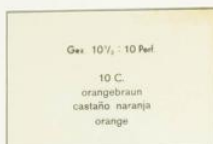
Mexico

1953/63



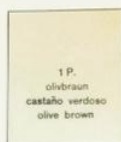
Wz. 12

Ma. 12



Mexico

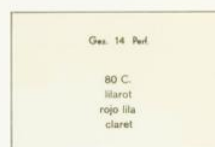
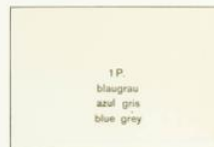
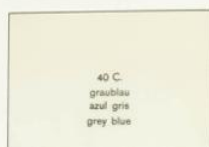
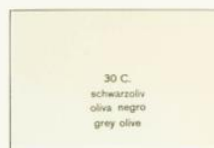
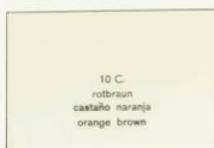
1953/63



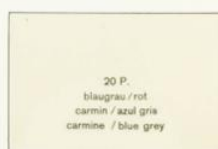
Ges. 11

11 Perf.

Ges. 10 1/2 - 10 Perf.



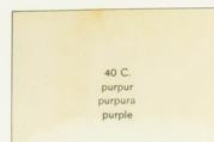
Ges. 14 Perf.



Mexico

Postversicherungs-Zuschlagsmarken — Seguro Postal — Insured Letter Stamps

Ws. 11 1950/51 Ms. 11



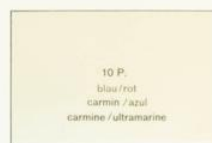
40 C.
purpur
purpura
purple



1 P.
gelbgrün
verde amarillo
yellow green

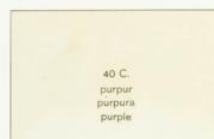


5 P.
grün/blau
azul oscuro/verde gris
dark blue/grey green



10 P.
blau/rot
carmin/azul
carmine/ultramarine

Ws. 12 1954 Ms. 12



40 C.
purpur
purpura
purple

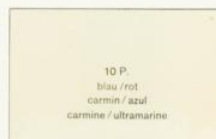


1 P.
gelbgrün
verde amarillo
yellow green



5 P.
blau/graugrün
azul/verde
blue/green

1963



10 P.
blau/rot
carmin/azul
carmine/ultramarine

Mexico

1954



1955



Mexico

1956



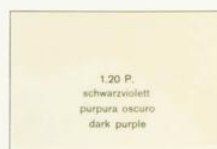
1963



1956



1962



*Subep
m.w.*

Mexico

1956



Mexico

1956

CENTENARIO DE LA PRIMERA ESTAMPILLA MEXICANA



DIRECCION GENERAL DE CORREOS.-S. C. O. P.

VALOR: \$ 15.00

17251

Mexico

1956



1957

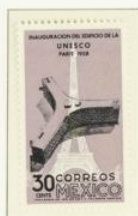


Mexico

1958



1959



1958



Mexico

1960



LEUCHTTURM

60.1

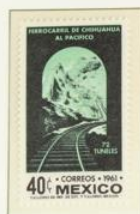
Mexico

1960



Mexico

1961

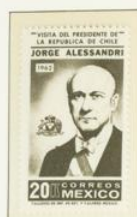


1962



Mexico

1962

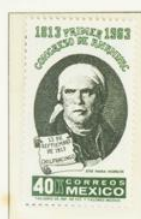


1963



Mexico

1963



Mexico

1963



Ws. 13 1963/66 Ms. 13



Mexico

1964



Mexico

1964



Wz. 13 1964/66 Ma. 13



Wz. 13 1964 Ma. 13



Mexico

1965



Mexico

1965



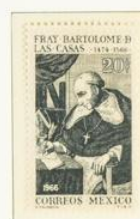
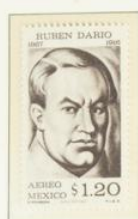
Mexico

1965



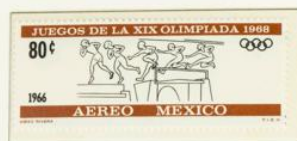
Mexico

1966



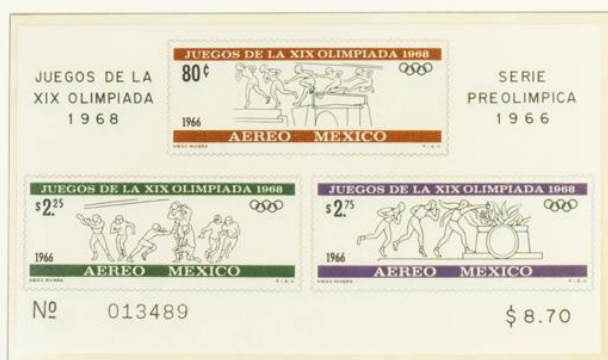
Mexico

1966



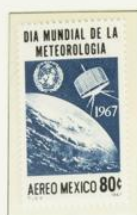
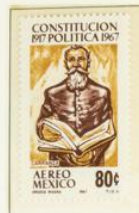
Mexico

1966



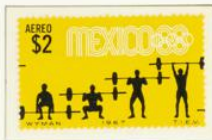
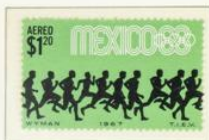
Mexico

1967



Mexico

1967



Mexico

1967

JUEGOS DE LA
XIX OLIMPIADA
1968



SERIE
PREOLIMPICA
1967



Nº 039407

\$ 1.50

JUEGOS DE LA
XIX OLIMPIADA
1968



SERIE
PREOLIMPICA
1967



Nº 110209

\$ 2.50

Mexico

1967

JUEGOS DE LA
XIX OLIMPIADA
1968



SERIE
PREOLIMPICA
1967

Nº 100318

\$ 3.50

JUEGOS DE LA
XIX OLIMPIADA
1968



SERIE
PREOLIMPICA
1967

Nº 036223

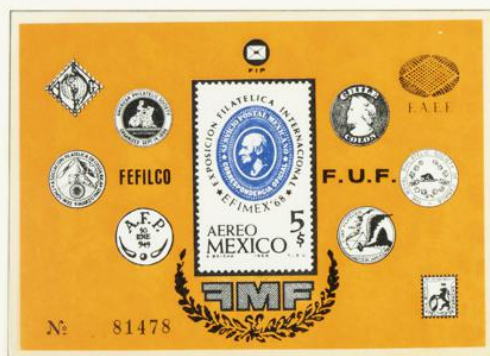
\$ 9.00

Mexico

1968



2 P.
orangerot / schwarz
rojo naranja / negro
orange-red / black



Mexico

1968



Mexico

1968



Mexico

1968



Mexico

1968



Mexico

1968

JUEGOS DE LA XIX OLIMPIADA 1968



Nº

0948

\$ 1.50

JUEGOS DE LA XIX OLIMPIADA 1968



Nº

0961

\$ 9.00

Mexico

1968

JUEGOS DE LA XIX OLIMPIADA 1968



Nº

47024



\$ 5.00

JUEGOS DE LA XIX OLIMPIADA 1968

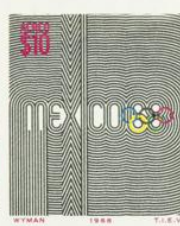
AEREO

\$5



Nº

17332



\$ 20.00

Mexico

1969



Mexico

1969



LEUCHTUM N 69

69.2

Mexico

1970



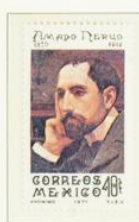
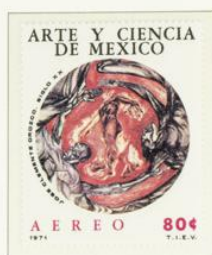
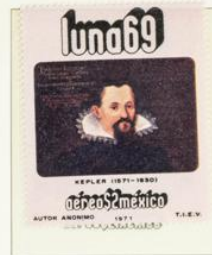
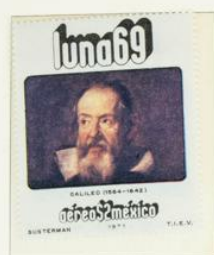
Mexico

1970



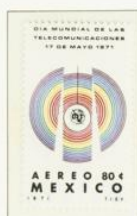
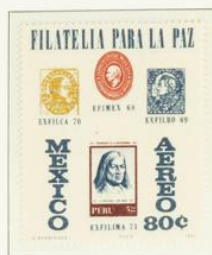
Mexico

1971



Mexico

1971



Mexico

1972



Mexico

1972



Mexico

1972



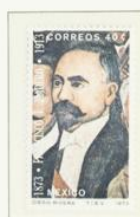
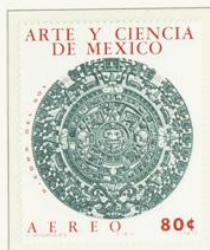
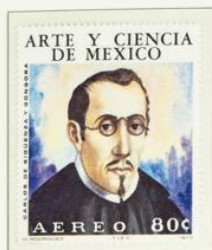
Mexico

1973



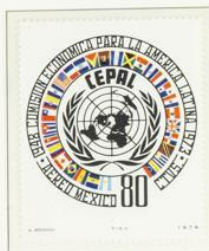
Mexico

1973



Mexico

1974



Mexico

1974



LEUCHTTURM N 74

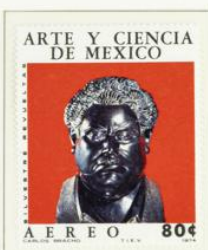
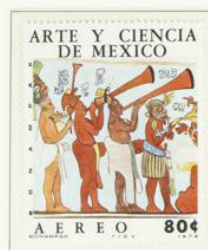
74.2

Mexico

1974



1974



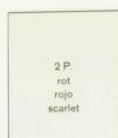
Mexico

1974



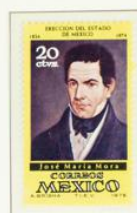
Mexico

1975



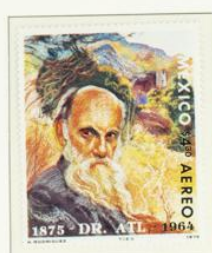
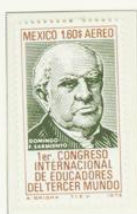
Mexico

1975



Mexico

1975



Mexico

1975



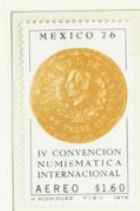
Mexico

1975



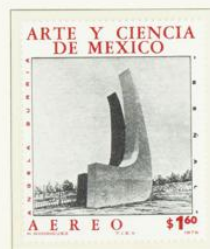
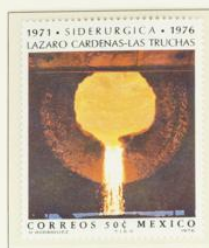
Mexico

1976



Mexico

1976

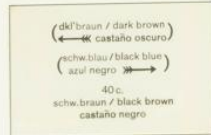


Mexico

1976

Geschnitt 14

Perforated 14



LEUCHTTURM N 76

76.4

Mexico

Ohne Wasserzeichen

1976

Wasserzeichen



Mexico

Postversicherungs-Zuschlagsmarken — Seguro Postal — Insured Letter Stamps

1975



1976



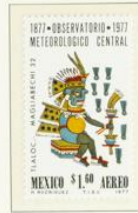
Mexico

1977



Mexico

1977



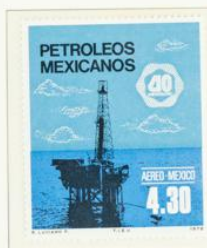
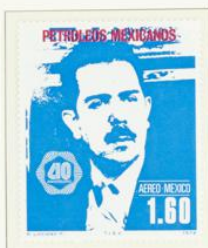
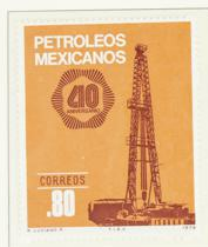
Mexico

1977



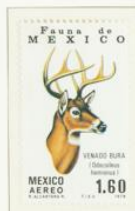
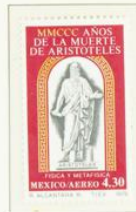
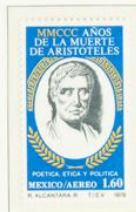
Mexico

1977/78



Mexico

1978



Mexico

1978



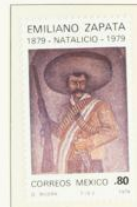
Mexico

1978



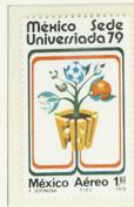
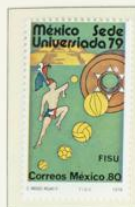
Mexico

1979



Mexico

1979



MEXICO SEDE UNIVERSIADA '79

México, país con amplia experiencia en la organización de eventos deportivos a nivel internacional, se prepara para ser sede de los Juegos Mundiales Universitarios, que se celebrarán en la Ciudad de México, durante el mes de septiembre de 1979.

COMITE ORGANIZADOR

JUEGOS MUNDIALES UNIVERSITARIOS — FISU FÉDÉRATION INTERNATIONALE DU SPORT UNIVERSITAIRE

La Universiada es, después de los Juegos Olímpicos, el evento de más trascendencia en el mundo deportivo amateur

Nació en Turín en 1959, y se ha llevado a cabo en las siguientes ciudades:

Sofía, 1961;		Turín, 1970;
Porto Alegre, 1963;		Moscú, 1973;
Budapest, 1965;		Roma, 1975;
Tokio, 1967;		Sofía, 1977;

y le fue concedida a México, la sede en 1979

COMITE ORGANIZADOR

Mexico

1979



UNIVERSIADA '79
MEXICO

UNIVERSIADA '79

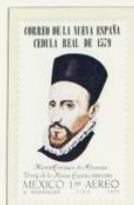


MEXICO



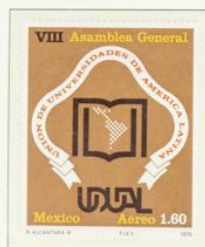
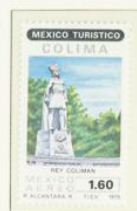
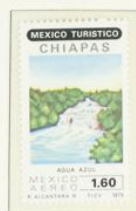
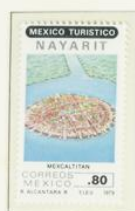
Mexico

1979



Mexico

1979



MEXICO

Con filigrana „MEX-MEX“ — 1979/80 — Wmk. „MEX-MEX“, with matte PVA gum

Perf. 11 : 11½



Perf. 14



Perf. 14

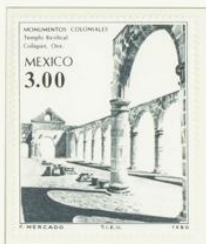
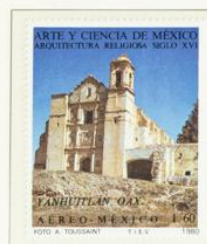
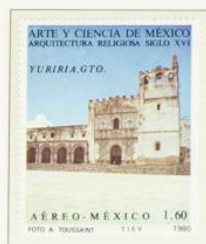
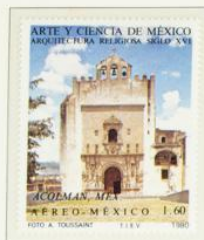


Aéreos — Air Post



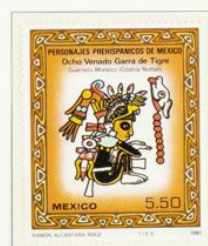
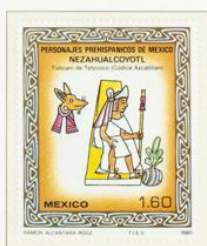
MEXICO

1980



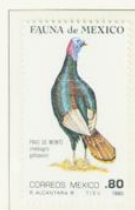
MEXICO

1980



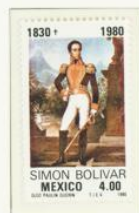
MEXICO

1980



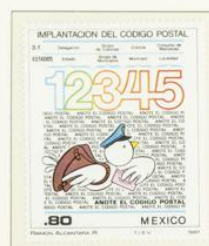
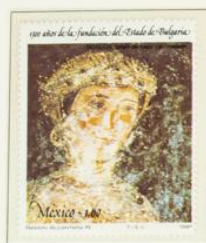
MEXICO

1980



MEXICO

1981



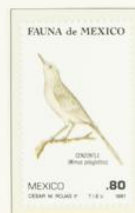
MEXICO

1981



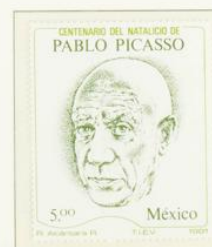
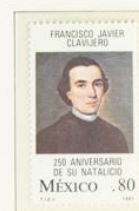
MEXICO

1981



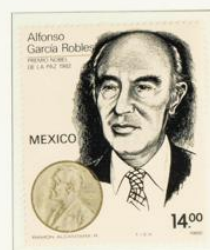
MEXICO

1981



MEXICO

1982



MEXICO

1982



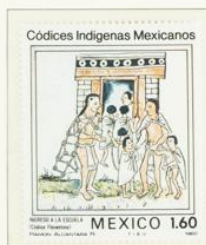
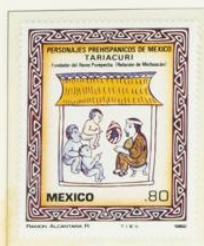
MEXICO

Since Sep. 4, 1982, all
commemorative stamps printed
on FLUORESCENT PAPER
without watermark.

Desde Sep. 4, 1982, todos
las conmemorativas sobre
PAPEL FLUORESCENTE
sin filigrana.

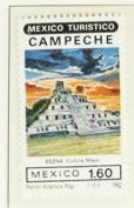
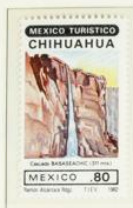
Ab dem 4. 9. 1982 sind alle
Gedenk- und Sondermarken auf
FLUORESZIERENDEM PAPIER ohne Wz.
(und OHNE phosphoreszierenden Aufstrich).

1982



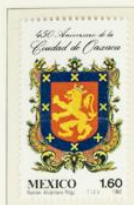
MEXICO

1982



MEXICO

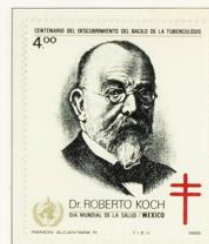
1982



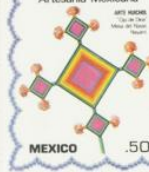
1982



Mártires de Río Blanco
75 Aniversario



Artesanía Mexicana



Artesanía Mexicana



Artesanía Mexicana



75 ANIVERSARIO PALACIO POSTAL



MEXICO

Phosphorescent coated paper
UNWATERMARKED

Papel fosforescente satinado
SIN FILIGRANA

Vorderseite phosphoreszierend
OHNE WASSERZEICHEN

1981



LEUCHTTURM N 82

81.2 A

MEXICO

1983

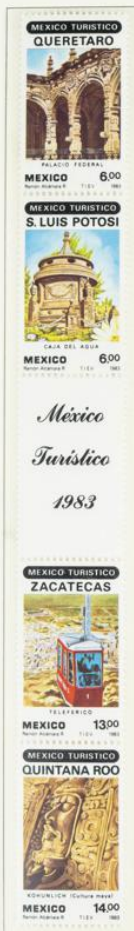


Papel grueso (11 mm) satinado
fluorescente, con filigrana „MEX-MEX“
goma brillante

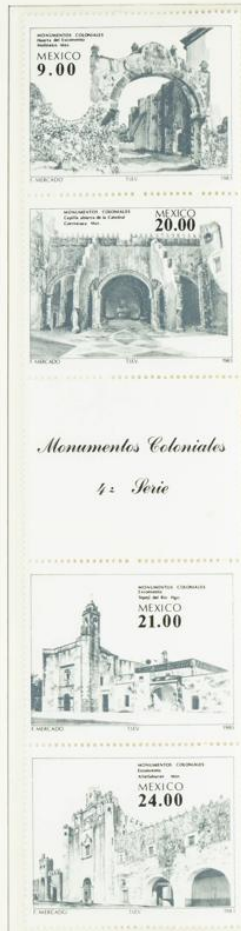
Thick (11 mm) glazed HiBrite paper,
fluorescent, with „MEX-MEX“ wmk,
glossy gum

MEXICO

1983



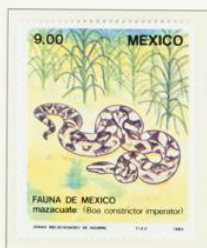
México
Turístico
1983



Monumentos Coloniales
4.ª Serie

MEXICO

1983





MEXICO

1984



MEXICO — Site of 1986 Soccer World Cup



MEXICO

1984





MEXICO

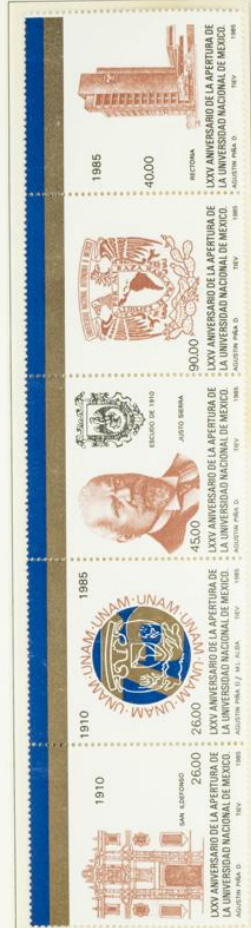
1985

175 AÑOS DE INDEPENDENCIA NACIONAL



MEXICO

1985



MEXICO

1985



Lanzamiento del Primer Satélite de Comunicaciones del Sistema Morelos



100.00 SCT MEXICO

T.I.E.V.

1985

J. CASTELLORT

MEXICO

1985



MEXICO

1985

75 AÑOS DE REVOLUCION MEXICANA



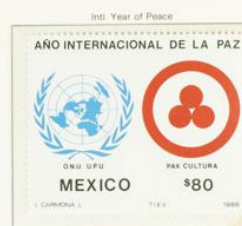
MEXICO

1985



MEXICO

1986



MEXICO

1986

1986 World Cup Soccer Championship



after paintings by Angel Zarraga (1886-1946)



MEXICO

Father of the Nation

1986



1986



1769-1811



1774-1811



1781-1811



1786-1843



Vice-President 1911, asassinated 1913



1786-1854, comrade in arms of Guadalupe Victoria

MEXICO

Famous Painter (1886-1957)



1986

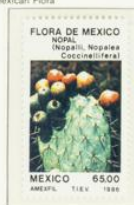
1986



1st Series on Mexican Painting



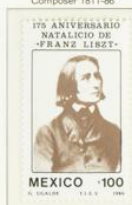
6th Series of Mexican Flora



Federal Tax Court



Composer 1811-86



500 yrs. Interaction betw. Old and New World



MEXICO

Father Eusebio F. Kino (Kuhn)



Jesuit missionary and explorer (1645-1711)

Rotonda of Illustrious Men



Minister of Justice (1823-1891)



Naval Commander and Statesman (1787-1845)



Military Leader and Statesman (1833-1901)



1862 Battle of Puebla



Congress of World Assoc. of Large Metropolises



Anti-Polio Campaign



Natl. Teacher's College



Apr. 7 World Health Day



MEXICO

It was five centuries ago that
"TWO WORLDS" first met

1987



1987

3rd Series of "Pre-Hispanic Personalities"



Chichimec Ruler, died 1232



Texcoco Ruler from 1472-1516



Aztec King Montezuma I reigned 1440-1469

2nd Series of "Mexican Native Codices" (Mendocino Code)



Foundation of Tenochtitlan 1325



Pre-Hispanic Wedding Ceremony



Montezuma's Council Hall



One of General Archive's old maps

MEXICO

1987



400th Anniversary of Publication of 1st Shipbuilding Manual in the Americas



"Native Market" 1961 Mural



Italian violin maker



CONASUPO Food Supply Org.



FNM Natl. Railroads of Mexico



CFE Fed. Electricity Commission



Flags of participating nations



10th Pan-Am Games



14th race of FORMULA 1 cars



Commemorating the Nov. 1987 Meeting in Acapulco of 8 Latin American Presidents



MEXICO

1987

7th Series of "MEXICO TOURISTIC REGIONS"



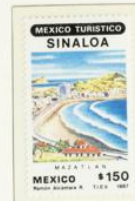
Toluca, cap. of Mexico State



On Lake Patzcuaro



Gargas Grotto near Monterrey



Pacific port and resort

DIA MUNDIAL DEL CORREO



MEXICO \$600
T.I.E.V. 1987

2nd "World Post Day" issue (depicting old Post Office Documents)



azul/blue



MEXICO \$150

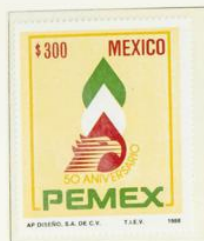


pink/rosa

MEXICO

1988

Inhumation in Rotunda of Illustrious Men
Nuclear Physicist (1899-1977)



50th Anniversary of Nationalization
of the Petroleum Industry



Mexican Fauna (VII)



Axolotl/Quetzalcoatl

PEMEX



Mexican Fauna (VII)



Maratí/Lamartin (Seahorse)

TWO WORLDS learning to know each other



Dominican friar records information
from Aztec painter-scribe

Centenary of Mexico-Japan Treaty



Joint Oceanographic Institutions Assembly



August 23-31, 1988, in Acapulco

12th "Art and Science" Series



Post (1897-1977)



Anthropologist (1896-1970)



Historian (1879-1957)

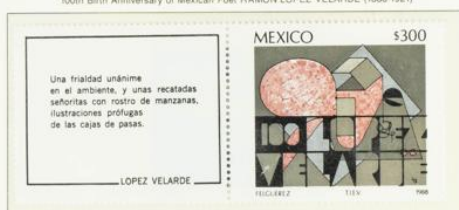
MEXICO

1988

50th Death Anniversary of Peruvian Poet and Writer CESAR VALLEJO (1892-1938)



100th Birth Anniversary of Mexican Poet RAMON LOPEZ VELARDE (1888-1921)



MEXICO

1988

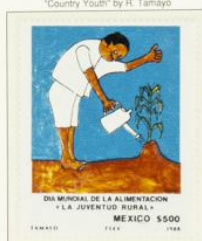
Summer Olympics, Seoul, Korea



On Jan. 15, 1988, the Supreme Court of Justice became the CONSTITUTIONAL COURT of Mexico



World Food Day
"Country Youth" by R. Tamayo



25th Anniversary of the
WORLD BOXING COUNCIL (WBC)



40th Anniv. WHO (World Health Organization)



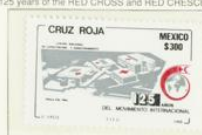
Apr. 7 World Health Day



Formula 1 Mexico Grand Prix 1988



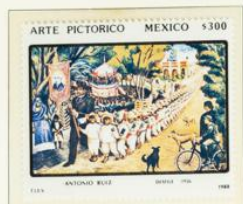
125 years of the RED CROSS and RED CRESCENT



MEXICO

1988

3rd Series on Mexican Pictorial Art



"The Procession"

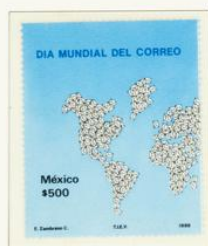


Self-Portrait of A.M. Ruiz (1895-1964)



"Indian Princess Costa Marín (1501-1550)"
Adrián, "Tongue & Mistress of Human Cords"

International Exposition and MEPSIR 88 Convention in Monterrey, N. L., May 1988



October 9, World Post Day

175th Anniv. of the 1813 Declaration by the Congress of Chilpancingo of



MEXICO'S INDEPENDENCE from Spain

MEXICO

1988

Conspiring with the 18th International Congress of Entomology, Vancouver, B. C. in July 1988, the WWF (World Wildlife Fund) supports



studies and efforts to ensure survival of wildlife down to BUTTERFLIES as e.g. the migratory Monarchs (Mariposa Monarca)



Edible corn fungus (anatom)



PSTSE



Seeds used for medical purposes



MEXICO

1989.6.23
Taking Zacatecas City in 1914

1989

1989.2.9
Graphic Arts Association



1989

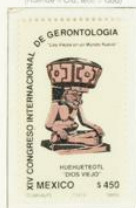
1989.3.17
 35 sec. Society for Copyright Protection



145 yrs. Independence of Dominican Republic

1989.3.1
100 yrs. Int. Boundary & Water Commission1989.3.4
10th Internat. Book Fair

Agree: God's Creator of all life!

1989.6.11
14th Acapulco Tourism Fair

1989.5.17
Writer and Diplomat (1989-1999)



1989.4.20
Independence Fighter (1789-1847)



1989.9.24
7th Int. Marathon Footrace, Mexico City



1989 5.28
Formula 1 Grand Prix of Mexico 1989



MEXICO

1989

1989 6.25
"THE HALL OF FAME OF PROFESSIONAL BASEBALL OF MEXICO" Monterey, Nuevo Leon



There are 3 sections: the "Sports Museum", the Hall of Fame and the Shrine of Immortals.
The stamp depicts the prime tower of the "Monterrey" building.

PTA (Fédération Internationale de Tir à l'Arc - International Federation of Archery), formed in 1932



July 4-8, 1989 - FITA's 125th World Archery Championships, Lausanne, Switzerland

MEXICO



MEXICO

1989

1989



MEXICO

1990

1990.5.3: STAMP WORLD LONDON '90

 1990.4.19: AMEXFIL
10th Anniv. of Mexican Philatelic Association


Indian Messenger with letter on split twig

 1990.5.6
150th Anniv. of PENNY BLACK Stamp


1990.1.11: Tampico Bridge



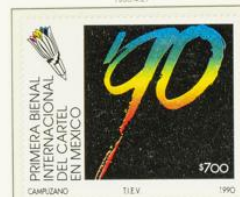
across R. Plaruro, Tamaulipas State

1990.4.24



Bicentenary of National Archives

1990.4.27



First Int. Poster Art Biennial

1990.2.10



Anti-Polio Campaign

1990.5.6



2nd Visit to Mexico of Pope John Paul II

1990.6.26



United Nations Anti-Drugs Decade

1990.6.24



Formula 1 Grand Prix of Mexico 1990

1990.10.8: 14th World Conference



of Masonic Supreme Councils

1990.8.24



8th Int. Marathon Footrace, Mexico City

MEXICO

1990

1990.10.12
The Old and the New World meet



1990.6.25: 25 years
Airports and Auxiliary Services



1990.8.17: 81 years
Mexico City Consultative Council



1990.9.27: 30th Anniversary
Nationalization of Electricity Industry



1990.7.6: Conservation of
Lacandon Tropical Forest



1990.8.8: Solidarity
with the underprivileged



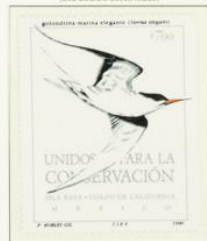
1990.8.10: Oaxaca's UNESCO Center
helps preserving "Máscara" a Cultural Heritage



1990.5.10
Mother and Child Health Program



1990.8.21: Tern
(Sea Swallow/Greifswalbe)



1990.6.5
World Environment Day



MEXICO

1990

1990.8.23: 25 yrs. Mexican Petroleum Institute



1990.9.18: 50 yrs. Colima University



1990.10.4: Campeche, founded in 1540.

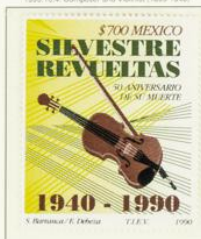


walled in and fortified 1686-1704

1990.11.20: 16th Central American & Caribbean Games (x: 1954-55 pg. 78)

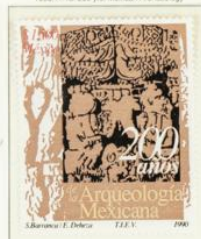


1990.10.4: Composer and Violist (1889-1940)



(vide page 124)

1990.11.18: 200 yrs. Mexican Archaeology



1342

1990.10.5: 1910 Francisco I. Madero drew up the San Luis Potosí Plan proclaiming the principles of



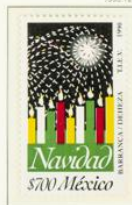
"Effective Suffrage, no Re-election"

1990.12.8: 50 yrs. Dog Fancier Society of Mexico



(vide page 84.3)

1990.12.3: Christmas 1990



1990.3.12: 11th Population & Housing Census



(vide page 85.4)

MEXICO

1991

(1990.10.9) 1991.4.3. (V) World Post Day 1990



(1990.12.5) 1991.8.22. "CANACINTRA"



50 yrs. Natl. Chamber of Industrial Development

1991.10.9. (VI) World Post Day 1991



Rouletted 6%

1991.1.11. Accident Prevention



Know the traffic regulations & prevent accidents

1991.7.9. Rouletted 6%



Total Solar Eclipse over Mexico July 11, 1991

1991.6.2. Rouletted 6%



1991 Rotary International Convention

(Issue dates in brackets were preannounced but were not actual dates of release)

MEXICO

1991



v pp. 87.1 & 90.1



v pp. 84.3, 85.3 & 90.2



100 yrs. Mexican Brewing Industry



15 yrs. Natl. Consumers Institute



16th Acapulco Tourism Fair



Reprinted 6/1

(Issue dates in brackets were preannounced but were not actual dates of release)

MEXICO

1991

1991.6.11. Centenary of SCT



Rouletted 6 1/2

Durchstochen

Centenary of SCT (Communications and Transportation Administration)



(See also pages 83.1, 84.3, 85.4, 85.5 & 90.1)

MEXICO

1991



Rouletted 6½



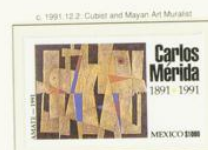
Perf. 14½ x 14 (v. pg. 90-2)



Rouletted 6½ (v. pp. 81.2, 82.6, 87.4, 88.3)



Rouletted 6½



Rouletted 6½



Inverted 1891 by Canadian Dr. J. Naamith (1891-1936)



Rouletted 6½



Rouletted 6½ (v. pp. 89.3 & 90.1)



MEXICO

Serie permanente „MEXICO EXPORTA“ Definitives

Novena Emisión — 1988 — 9th Issue

Papel grueso "Granito" (0.11 mm, 99gr/m²), con fibras azules de rayón viscosa, con filigrana "MEX-MEX y Águila", por lo demás papel normal (=non-luminescente, solamente con un poco "blanqueador óptico"). Goma a base de dextrina tropical, color marfil.

Thick (0.11 mm, 99gr/m²) "Granite" HiBrite Paper, with embedded blue rayon fibres, watermarked "MEX-MEX & Eagle". The paper is untagged (non-luminescent); the weak and varying radiation seen under longwave UV-light stems from "optical brighteners" as are nowadays added in the ordinary run of the mill manufacturing process of HiBrite paper. Shiny ivory colored dextrine gum.

Tpo I Impresión de moaré — Perf. 14 — Type I Burelage

Sc. 1501-50 1481 a/M. 2077



26.5 mm (base topmkt)



26.5 mm — black



26 mm — gray OA & org



26 mm — yellow & red tan



26 mm — buff & red tan



26 mm — apple grn & org

MEXICO

Serie permanente "MEXICO EXPORTA" Definitives

Decima Serie

1988/90 – Perf. 14

10th issue

Papel grueso satinado (0.115mm=105/110gr/m2), SIN FILIGRANA y sin luminiscencia; solamente de vez en cuando con un poco 'blanqueador óptico'. Goma seca invisible.

Thick (.115mm-105/110gr/sqm) UNWATERMARKED, **ordinary** non-luminescent glazed paper, with **dry invisible gum**. Under long-wave UV-light some of the 1990 re-issues give off a faint gleam; this is of no significance and stems from 'optical brighteners' which are customarily added nowadays in the ordinary 'run of the mill' paper manufacturing process.



MEXICO

Serie permanente „MEXICO EXPORTA“ Definitives

Papel fosforescente satinado SIN FILIGRANA
Goma OPACA

Thick UNWATERMARKED phosphorescent coated paper
with MATTE (DULL) PVA gum

1981/82

Perf. 11 - 11 1/2



Perf. 11 1/2 - 11 1/2



Perf. 14



México 1982



Aéreos — Air Post



SG 131a/b/c: C 50b

MEXICO

Serie permanente „MEXICO EXPORTA“ Definitives

1981

Papel DELGADO fluorescente SIN FILIGRANA
goma BLANCA BRILLANTE

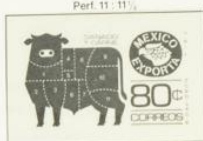
THIN UNWATERMARKED and uncoated fluorescent paper
with GLOSSY gum

Perf. 14



M. 1780

Perf. 11 : 11½



M. 1782 C

Perf. 11½ : 11½



M. 1782 D

Perf. 14



M. 1786

Perf. 14



M. 1788

Aéreos — Perf. 14 — Air Post



M. 1788



90-1981-05c C. 300 M. 1807

MEXICO

Serie permanente „MEXICO EXPORTA“ Definitives

1981/82

Papel fosforescente satinado SIN FILIGRANA
la goma es de color marfil BRILLANTE

Perf. 14

Thick UNWATERMARKED phosphorescent coated paper,
with ivory colored GLOSSY gum

Aéreo



Air Post

Papel fosforescente satinado
con filigrana „MEX-MEX“;
la goma es BLANCA MATE

Perf. 14

Thick phosphorescent coated paper,
watermarked „MEX-MEX“
with MATTE (DULL) PVA gum



SG 1482 a/b; C 1106/M; 1981

Aéreos — Air Post



SG 1501 a/b; C 1347/M; 1981



Sr: C 852/M; 1981

MEXICO

Seguro Postal — Insured Letter Stamps

Papel fosforescente satinado
Filigrana No. 15
„MEX-MEX y Aguila“

1972/76

Phosphor coated paper
Wmk. 5G W 230/Sc. 300
Mi. Wz. 12/Yvert F

Perf. 14



Papel fosforescente satinado
sin filigrana

1976

Phosphor coated paper
unwatermarked

Perf. 14

with semi-gloss dextrine gum



Filigrana No. 15 „MEX-MEX“

1979/80

Wmk. 5G W 230/Sc. 300/Mi. Wz. 12

with matte PVA gum



MEXICO

Serie permanente „MEXICO EXPORTA“ Definitives

Sexta Emisión — 1984/86 — Sixth Issue

Papel semi-grioso (0.09 mm), bond blanco, SIN FILIGRANA,
fluorescencia intensa anverso, goma PVA mate.
(Ver nota al pie)

Medium thick (0.09 mm) HiBrite paper, UNWATERMARKED,
extra bright fluorescence on face, with DULL PVA gum
(see also footnote No. 3)

1984 — Perf 14



37 mm — black & orange

1984 — Perf 14



36 mm (see Footnote 1)

1984 — Perf 14



37 mm red brown (M: 1780 Aa)

1984 — Perf 14



36 mm (M: 1781 A 1)

1984/85 — Perf 14



37 mm (S5 1354 Sa)

1984 — Perf 11.5 x 11.25 (Footnote 2)



37 mm (M: 1780 Da)

1984 — Perf 11.5 x 11.25



36 mm — bright orange

1984/85 — Perf 11.5 x 11.25



36 mm (M: 1780 Da)

1985 — Perf 11.5 x 11.25



36 mm gray (S5 1357 Cb)

Orange 3.6 mm



1984 — Perf 11 x 11.25



36 mm — bright orange

Orange 3.6 mm



Gray 3.6 mm

1984 — Perf 14



36 mm — Prussian blue (S5 1355)

1984 — Perf 14



36 mm — 3. blue gray (M: 1788 Aa)

1984 — Perf 11.5 x 11.25



36 mm — stable brown

1985 — Perf 11.5 x 11.25



36 mm — stable brown

1984 — Perf 11 x 11.25



36 mm — stable brown (S5 1355)

«LEUCHTTURM» N 86

Notes: (1) Width of design incl. imprint (indicated underneath spaces)
(2) Stamps perforated other than perf. 14 are 25.5 mm high
(3) 1984 printings on somewhat translucent paper, subsequent printings generally on a glazed, more opaque paper stock

84.1

MEXICO

Serie permanente „MEXICO EXPORTA“ Definitives

Sexta Emisión — 1984/86 — Sixth Issue

Papel semi-grueso (0.09 mm), bond blanco, SIN FILIGRANA,
fluorescencia intensa anverso, goma PVA mate
(Ver nota al pie)

Medium thick (0.09 mm) HiBrite paper, UNWATERMARKED,
extra bright fluorescence on face, with DULL PVA gum
(see also footnote No. 3)



•LEUCHTTURM• N 86

Notes: (1) Width of design incl. imprint (indicated underneath spaces)
(2) Stamps perforated other than perf. 14 are 25.5 mm high
(3) 1984 printings on somewhat translucent paper, subsequent printings generally on a glazed, more opaque paper stock.

84.1 A

MEXICO

Serie permanente „MEXICO EXPORTA“ Definitives

Sexta Emisión — 1984/86 — Sixth Issue

Papel semi-grueso (0.09 mm), bond blanco, SIN FILIGRANA,
fluorescencia intensa anverso, goma PVA mate
(Ver nota al pie)

Medium thick (0.09 mm) HiBrite paper, UNWATERMARKED,
extra bright fluorescence on face, with DULL PVA gum
(see also footnote No. 3)

1986 — Perf. 11.5 x 11.25



(37 mm — dk. brown (footnote 2))

1986 — Perf. 14



(32.5 mm (see footnote 1))

1985 — Perf. 14



(36 mm — magenta & gold lines)

1986 — Perf. 14



(36 mm — cobalt blue)

1986 — Perf. 14



(36 mm (M. 1982 A))

1984/86 — Perf. 14



(35.5 mm (M. 1983 A))

1984/86 — Perf. 14



(35.5 mm)

1984 — Perf. 14



(36 mm)

1984 — Perf. 14



(36 mm)

1984 — Perf. 14



(36 mm)

•LEUCHTTURM• N 86

Notes: (1) Width of design incl. imprint (indicated underneath spaces)
(2) Stamps perforated other than perf. 14 are 25.5 mm high.
(3) 1984 printings on somewhat translucent paper, subsequent printings generally on a glazed, more opaque paper stock.

84.2

MEXICO

Serie permanente „MEXICO EXPORTA“ Definitives

Papel de 97 gr/m² (0.09 mm), bond blanco satinado
SIN FILIGRANA, fluorescencia intensa en anverso,
goma PVA mate blanca nacar

Medium thick glazed HiBrite paper (97 gr/sqm = 0.09 mm)
UNWATERMARKED, very bright fluorescence on face,
with DULL nacre white PVA gum

Sexta Emisión — 1984 — Sixth Issue

Perf. 14 — 37 × 21 mm



back & orange

Perf. 14 — 35.5 × 20.5 mm



back & orange

Perf. 14 — 36 × 20.5 mm



(No. 601 n. 37 of DAVIDSON)

Perf. 14



Perf. 11 1/2 : 11 1/2



Perf. 11 : 11 1/2



Perf. 14



Perf. 11 1/2 : 11 1/2



Perf. 11 1/2 : 11 1/2



Perf. 11 : 11 1/2



Perf. 14



Perf. 11 1/2 : 11 1/2



Perf. 11 : 11 1/2



Perf. 14



light shade

light shade

dark blue

MEXICO

Serie permanente „MEXICO EXPORTA“ Definitives

Papel de 97 gr/m² (0.09 mm), bond blanco satinado
SIN FILIGRANA, fluorescencia intensa en anverso,
goma PVA mate blanca nacar

Medium thick glazed HiBrite paper (97 gr/sqm - 0.09 mm)
UNWATERMARKED, very bright fluorescence on face,
with DULL nacre white PVA gum

Sexta Emisión — 1984 — Sixth Issue

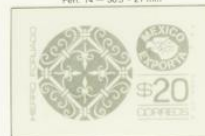
Perf. 14 — 36 × 20.5 mm



Perf. 14 — 36 × 20.5 mm



Perf. 14 — 36.5 × 21 mm



dark grey

Perf. 14 — 33.5 × 19 mm



Perf. 14 — 36 × 20.5 mm



Perf. 14 — 36 × 20.5 mm



Perf. 14 — 35.5 × 20 mm



Perf. 14 — 35 × 20 mm



Perf. 14 — 36 × 21 mm



Perf. 14 — 36 × 21 mm



MEXICO

Serie permanente „MEXICO EXPORTA“ Definitives

Papel delgado (08 mm) satinado SIN FILIGRANA,
fluorescente en un o ambos lados,
goma PVA blanca mate

Thin (08 mm) UNWMD glazed HiBrite paper,
fluorescent on one or both sides,
with DULL white PVA gum

Quinta Emisión — 1982/83 — Fifth Issue

Perf. 14



(Sc. 1111)



(Sc. 1113/M. 1780)



(Sc. 1115/M. 1782 A)

Dark vio & brn org



(Sc. 1119/M. 1782 x)

Light vio & brn org



(Sc. 1119/M. 1782 b)



(Sc. 1121/M. 1784)

Caja chica/New plate



(Perf. 14, 1" of DAVIDSON)

Perf. 14



(Sc. 1123/M. 1786)

Perf. 11; 11½



(Sc. 1124/M. 1788)



(Sc. 1125/M. 1787)

Aéreo



(Sc. C 483/M. 1808)

Air Post

MEXICO

Seguro Postal — Insured Letter Stamps

Papel estucado fosforescente,
sin filigrana, goma brillante

— 1981 —

Phosphorescent coated HiBrite paper,
unwatermarked, semi-glossy dextrine gum

Perf. 14



Su. 0.36 x M. 92.37



M. 92.30

Papel delgado (.08 mm) satinado fluorescente,
sin filigrana, goma PVA mate

— 1982/83 —

Thin (.08 mm) fluorescent HiBrite paper,
unwatermarked, with dull PVA gum

Candado 33 mm de alto — Perf. 14 — Padlock 33 mm high



M. 92.36



M. 92.37



M. 92.38



M. 92.39



M. 92.40

1983

Candado 31 mm de alto — Perf. 14 — Padlock only 31 mm high



Su. 0.36 x M. 92.37



Su. 0.36 x M. 92.37



Su. 0.36 x M. 92.37



Su. 0.36 x M. 92.37

MEXICO

Serie permanente „MEXICO EXPORTA“ Definitives

Papel delgado (08 mm) satinado SIN FILIGRANA,
fluorescente en un o ambos lados,
goma PVA blanca mate

Thin (08 mm) UNWMD, glazed HiBrite paper,
fluorescent on one or both sides,
with DULL white PVA gum

Quinta Emisión — 1983 — Fifth Issue

Perf 14



M-178A

Perf 11 (11)

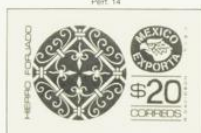


M-178D

Perf 14



(Incl. 1128M-179)



(Incl. 1128M-179)



M-179



M-179



M-180



M-180

MEXICO

Serie permanente „MEXICO EXPORTA“ Definitives

Sexta Emisión — 1984/87 — Sixth Issue

Papel semi-grueso (0.09 mm), bond blanco, SIN FILIGRANA,
fluorescencia intensa anverso, goma PVA mate
(Ver nota al pie)

Medium thick (0.09 mm) HBI® paper, UNWATERMARKED,
extra bright fluorescence on face, with DULL PVA gum
(see also footnote No. 3)

1987 - Perf. 14



36.5 mm - cartoon (see footnote 1)

1987 - Perf. 14



36.5 mm - black & orange

1987 - Perf. 14



36.5 mm - red-orange & green

1986 - Perf. 11.5 x 11.25



37 mm - brown (footnote 2)

1986 - Perf. 14



35.5 mm - orange-brown

1987 - Perf. 11.5 x 11.25



35.5 mm (footnote 2)

1985 - Perf. 14



36.5 mm - magenta & gold lines

1986 - Perf. 14



36 mm - solid blue

1986 - Perf. 14



36 mm - green & blue

1987 - Perf. 11.5 x 11.25



37 mm - dk. brown (footnote 3)

LEUCHTTURM © N 87 (Replacement)

Notes: (1) Width of design incl. imprint (indicated underneath spaces)
(2) Stamps perforated other than perf. 14 are 25.5 mm high
(3) 1984 printings on somewhat translucent paper, subsequent
printings generally on a glazed, more opaque paper stock

84.2

MEXICO

Serie permanente „MEXICO EXPORTA“ Definitives

Sexta Emisión — 1984/87 — Sixth Issue

Papel semi-grueso (0.09 mm), bond blanco, SIN FILIGRANA.
 Fluorescencia intensa anverso, goma PVA mate.
 (Ver nota al pie)

Medium thick (0.09 mm) HiBrite paper, UNWATERMARKED,
 extra bright fluorescence on face, with DULL PVA gum
 (see also footnote No. 3)

1984/86 - Part 14



100 mm - scarlet & green (fluoresce to)

1984/86 - Part 14



200 mm - scarlet & green (inverted Sunburst)

1985 - Part 14



200 mm - scarlet & green

1987 - Part 14



200 mm - scarlet & green

1984 - Part 14



300 mm - scarlet & red (inverted Sunburst)

1986 - Part 14



300 mm - scarlet & red

1984 - Part 14



400 mm - scarlet & red (scarlet)

1984 - Part 14



500 mm - green & orange

„LEUCHTTURM“ © N 87

Notes: (1) Width of design incl. imprint (indicated underneath spaces)
 (2) Stamps perforated other than part 14 are 25.5 mm high
 (3) 1984 printings on somewhat translucent paper, subsequent printings generally on a glazed, more opaque paper stock.

84.2 A

MEXICO

Serie permanente „MEXICO EXPORTA“ Definitives

Quinta y Sexta Emisiones — 1983/84 — 5th & 6th Issues

Papel delgado (0.08 mm = 85 gr/m²) SIN FILIGRANA, goma PVC mate
5a: fluorescente sólo el frente
6a: fluorescente en ambos lados

Thin (0.08 mm = 85 gr/m²) UNWATERMARKED HiBrite paper, dull gum
5th issue: fluorescent-chalk coated on face only
6th issue: fluorescent on both sides

1983 — Part. 14



38.5 mm — SG 1300/MS

1983 — Part. 14 — Black



37.5 mm — SG 1792 Aa

1983 — Part. 14 — Black



38.5 mm — SG 1302/MS, 1793 Aa

1984 — Part. 14 — 5th Issue only



38.5 mm — SG 1793 Aa A

1983 — Part. 14 — Blue & yellow lines



38 mm — SG 1333/SG 1362/MS, 1797 A

Tipo I Impresión de moaré — 1983 — Part. 14 — Type I Gray Burelage



38.5 mm — SG 1524



35.5 mm — MS 1804 Aa



38 mm — SG 1363 g

Aereo — Air Post

1983 — Part. 14



37.5 mm — SG C 493/MS, 1805 A

MEXICO

Serie permanente „MEXICO EXPORTA“ Definitives

Octava Emisión — 1986/88 — Eighth Issue

Papel semi-grueso (0.09 mm = 97 g/m²) satinado no transparente,
SIN FILIGRANA, fluorescencia intensa anverso, goma mate

Medium thick (0.09 mm = 97 g/sqm) non-translucent paper,
UNWATERMARKED, bright fluorescence on face, dull gum

Perf. 14

1986 - lemon & grn - Mi. 1804 Aa



20 mm — Type I Burelage

1987 - olive & grn - Mi. 1804 Ad



20 mm — Type I Burelage

Fecha de emisión — June 1, 1988 — Date of Issue

Sin líneas agregadas/goma mate crema blanca — Without burelage, with cream-colored somewhat dull gum



36.5 mm (wide horizontal)



25.5 mm



26 mm — 40 mm (30 mm & 40 mm)



36 mm (tall)

MEXICO

Serie permanente "MEXICO EXPORTA" Definitives

Primera Emisión — 1975/78 — First Issue

Papel satinado fosforescente en el anverso,
SIN FILIGRANA, goma brillante

— Perf. 14 (u.o.m.) —

Glazed medium thick (.09 mm), Tagged Yellow
(= phosphorescent chalk coated)
Hi-Brite paper, UNWATERMARKED, glossy dextrin gum



Perf. 14



Perf. 11 x 11.25
(See footnote 2)



© LEUCHTTURM® © N 1990 (Replacement)

Notes: (1) Width of design incl. imprint (indicated underneath spaces)
(2) Stamps perforated other than perf. 14 are 25.5 mm high

MEXICO

Serie permanente "MEXICO EXPORTA" Definitives

Primera Emisión — 1975/78 — First Issue

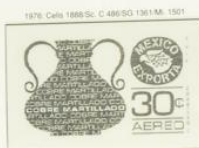
Papel satinado fosforescente en el anverso,
SIN FILIGRANA, goma brillante

— Perf. 14 —

Glazed medium thick (0.9 mm), Tagged Yellow
(= phosphorescent chalk-coated)
Hi-Brite paper, UNWATERMARKED, glossy dextrin gum

Aéreos

Air Post



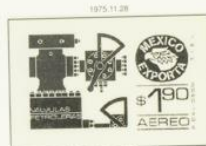
37 x 26 mm (see backsheet) — copper-brown



37 x 26 mm — buff blue



37 mm — black & orange



37 mm — vermilion & dk green



37.25 mm — ultramarine & gold



37 mm — yellow & brown



37 mm — buff, pink & olive



37 mm — dk blue & yellow



36.75 mm — red & black



37 mm — yellow-green & orange

MEXICO

Serie permanente "MEXICO EXPORTA" Definitives

Segunda Emisión — 1979/81 — Second Issue

Papel satinado grueso (0.10 mm), fosforescente en el anverso,
con filigrana "MEX-MEX", goma PVA opaca

— Perf. 14 (u.o.m.) —

Thick (0.10 mm), Tagged Yellow (= phosphorescent-chalk-coated)
glazed Hi-Brite paper, wmkd. "MEX-MEX", with dull PVA gum



37.5 mm — see footnote 1 — black



37.25 mm — blue black



Comb Perf. 14

37 mm — carmine



37 mm — carmine

Hollow Perf. 11 x 11 1/2
(See footnote 2)



37.5 mm — ultramarine & orange



37.25 mm — 60° green & blue



37 mm — brown



37.5 mm — dk brown & tan



37 mm — grey olive



36.5 mm — dk & lt green



37.5 mm — black



37.25 mm — grey blk & rose

—LEUCHTTURM— © N 1990 (Replacement)

Notes: (1) Width of design incl. imprint (indicated underneath spaces)
(2) Stamps perforated other than perf. 14 are 25.5 mm high

(80.1) 147

MEXICO

Serie permanente "MEXICO EXPORTA" Definitives

Segunda Emisión — 1979/81 — Second Issue

Papel satinado grueso (0.10 mm), fosforescente en el anverso,
con fragancia "MEX-MEX", goma PVA opaca

— Part 14 —

Thick (.10 mm), Tagged Yellow (= phosphorescent-chalk-coated)
glazed Hi-Brite paper, wmkd. "MEX-MEX", with dull PVA gum

Aereos

Air Post

1979 T1 — Cella 2054 Sc: C 594 SG 1482 M: 1678



36.75 mm (wide horizontal) — red, tan & yellow

1979



37 mm — orange & black

1981



35 mm — dk green & vermilion

1979 T1 —



37 mm — green & vermilion

1981.2 —



37 mm — brown & yellow

1980



37 mm — dull orange & dk blue

1981.3 —



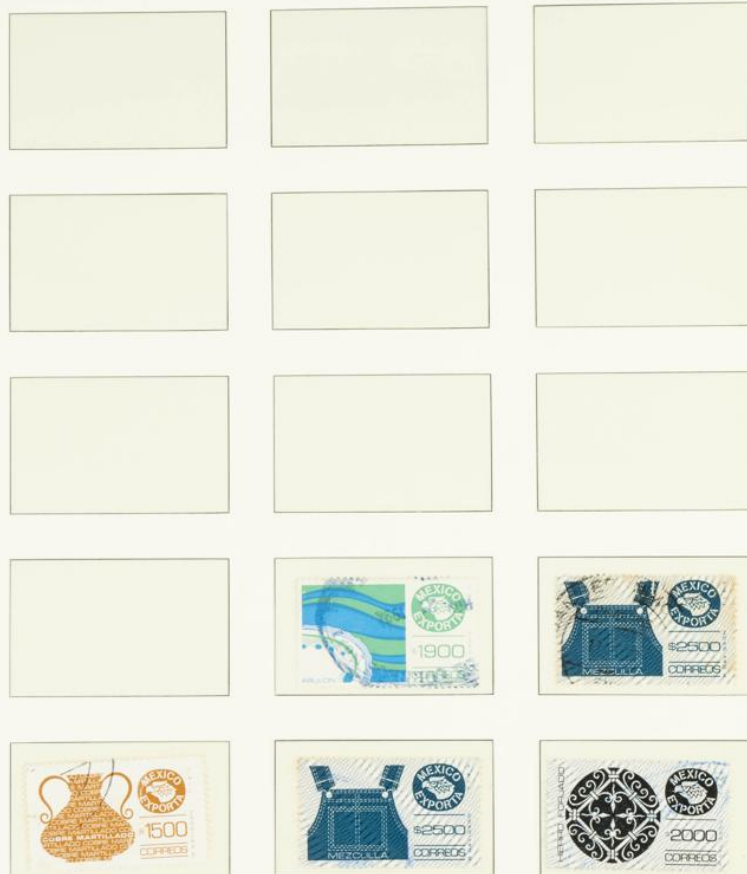
36.75 mm — green & yellow-green

1979 T1 — Cella 2061 Sc: C 603 SG 1489 M: 1692



36.75 mm — grey — centre — green

AUTOMATEN-POSTWERTZEICHEN — MACHINE LABELS
EMPREINTES DE DISTRIBUTEURS



«LEUCHTTURM»

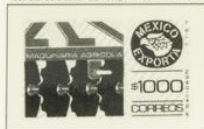
MEXICO

Decima Serie
Grupo X-A: Papel grueso non-luminiscente,
sin filigrana, goma seca invisible

"Mexico Exporta"
1988/91 - Perf. 14

10th Issue
Group X-A: Thick non-luminiscent
glazed paper, unwatermarked, dry invisible gum

1989.5.3 Cels 268 / SG 1362p / M. 2577+ / Yr. 1249a



36.5 mm - with Type I Burelage



36.5 mm - without burelage

1989.3.13 Sc 1362 / SG 1362q / M. 2120x



37 mm - with Type I Burelage

1991.4 Sc 1362A / M. 2212



37 mm - without burelage

1989.4.18 Sc 1364 / SG 1364v / M. 2156x



37 mm - with Type I Burelage

1990.1.16 Sc 1363 / SG 1363b



37 mm - without burelage

1990.4.13 Sc 1365 / SG 1365g / M. 2180



36 mm

1990.0.8 Vackinas 1843 / Sc 1336



33.5 mm - tan / brown

1990 Sc 1596a / SG 1360b / M. 2161



33.5 mm - orange / brown

1990.3.13 Sc 1367 / SG 1367v / M. 2162



36 mm

1990.4.8 Sc 1598 / SG 1360v / M. 2153



37.5 mm

1990.7.2 Sc 1600 / SG 1360v / M. 2188



37 mm

1989.11.21 Vack 1596 / SG 1360x / M. 2078x



36 mm - with Type I Burelage

1991.5 Sc 1601 / M. 2214



36 mm - with Type I Burelage

1991.6 Sc 1602 / M. 2242



36 mm - with Type I Burelage

MEXICO

Serie permanente „MEXICO EXPORTA“ Definitives

Septima & Octava Emisiones — 1984/87 — 7th & 8th Issues

Medium thick (09 mm = 97 gr/140g) HiBrite paper: UNWATERMARKED, bright fluorescence on face, dull gum

7th issue: paper somewhat translucent

8th issue: opaque (non-translucent) paper

Note: Stamps on this page exist on both types of paper (translucent and opaque, u.o.m.)

1984/85 — Part 14 — SG 1359 ba



37 mm (base) x 26 mm (height)

1984 (7th issue) Part 14 — Sc 1125



36 mm (width)

1985 (8th issue) Part 14 — Sc 1125



36 mm (width) x 26 mm (height)

Sc 1121 C — Part 14 — Sc 1125 — M. 1787 D



1984/85 — 36 mm (width)

„Broken Rim/Tubo rotto“ variety



36 mm (width)

Sc 1125 b — Part 14 — SG 1360 ab



1984/85 — 36 mm (width) x 26 mm (height)

1984 (7th issue) Part 14 — Sc 1126



36 mm (width) x 26 mm (height)

1985 (8th issue) Part 14



36 mm (width) x 26 mm (height)

Sc 1128 — Part 14 — M. 1793 A 9 D



1984/85 — 36 mm (width) x 26 mm (height)

1985 — Part 14



36 mm (width) x 26 mm (height)

1985 — Part 14



36 mm (width) x 26 mm (height)

1984/85 — Part 14 — M. 1803 AD



36 mm (width) x 26 mm (height)

1984/86 — Part 14 — M. 1804 AaK



36 mm (width) x 26 mm (height)

1984 (7th issue) Part 14 — M. 1805 AK



36 mm (width) x 26 mm (height)

1986 (8th issue) Part 14



36 mm (width) x 26 mm (height)

1984/87 — Part 14 — M. 1806 A



36 mm (width) x 26 mm (height)

1984/87 — Part 14 — Sc 1138



36 mm (width) x 26 mm (height)

*LEUCHTTURM® N 88 (Replacement)

Notes:

- (1) Width of design incl. imprint (indicated underneath spaces)
- (2) Stamps perforated other than part 14 are 25.5 mm high
- (3) 1984 printings on somewhat translucent paper; subsequent printings on opaque paper

84 1A

MEXICO

Serie permanente „MEXICO EXPORTA“ Definitives

Cuarta Emisión — 1981/83 — Fourth Issue

Papel grueso (0.10 mm) estucado fosforescente,
SIN FILIGRANA, goma PVA mate

Thick (0.10 mm) phosphorescent - chalk coated HiBrite paper,
UNWATERMARKED, with dull PVA gum



-LEUCHTTURM- © N 88 (Replacement)

Notes: (1) Width of design incl. imprint (indicated underneath spaces)
(2) Stamps perforated other than part 14 are 25.5 mm high

82.3

MEXICO

Serie permanente „MEXICO EXPORTA“ Definitives

Quinta y Sexta Emisiones — 1982/84 — 5th & 6th Issues

Papel delgado (0.08 mm = 85 gr/sqm) SIN FILIGRANA, goma PVC mate
5a: fluorescente sólo el frente
6a: fluorescente en ambos lados

Thin (0.08 mm = 85 gr/sqm) UNWATERMARKED H/Brite paper, dull gum
5th issue: fluorescent-chalk coated on face only
6th issue: fluorescent on both sides



•LEUCHTTURM• © N 88 (Replacement)

Notes: (1) Width of design incl. imprint (indicated underneath spaces)
(2) Stamps perforated other than part. 14 are 25.5 mm high

83.4

MEXICO

Serie permanente „MEXICO EXPORTA“ Definitives

Octava Emisión — 1986/88

Eighth issue

	Octava Emisión	—	1986/88	—	Eighth Issue
	Papel semi-grueso (0.09 mm = 97 gr/m ²) satinado no transparente, SIN FILIGRANA, fluorescencia intensa avverso , goma mate				Medium thick (0.9 mm = 97 gr/sqm) non-translucent paper, UNWATERMARKED, bright fluorescence on face, dull gum

Perf. 14 (u.o.m.)



27 rue du Commerce



36 mm Part 11.5 x 11.25 (Standard Z)



27 mm black & orange



36 mm pale gm & gold lines



36 mm - Size Part 14 - 1102



26.5 mm warm & yellowish



37 mm brown



111 red orange brown.



34.5 mm pure & gold lines



© 2000 Blackwell Science Ltd





-LEUCHTTURM- • N 88 (Replacement II)

Notes: (1) Width of design incl. imprint (indicated underneath spaces)
(2) Stamps perforated other than perf. 14 are 25.5 mm high

842

MEXICO

Serie permanente „MEXICO EXPORTA“ Definitives

Septima Emisión — 1984/85 — Seventh Issue

Papel semi-grueso (0.09 mm = 97 gr/m²), un poco translúcido, SIN FILIGRANA, fluorescencia intensa anverso, goma mate
Medium thick (0.09 mm = 97 gr/m²), somewhat translucent paper, UNWATERMARKED, bright fluorescence on face, dull gum

Perf. 14 (unless otherwise mentioned)



•LEUCHTTURM• • N 88 (Replacement)

Notes: (1) Width of design incl. imprint (indicated underneath spaces)
(2) Stamps perforated other than perf. 14 are 25.5 mm high

84.1

Mexico

1976



no es momento en York

MEXICO

1991

1991.12 - Ibero-American Summit at Guadalajara



1991.11 - Two Worlds meeting each other



1991.12 - 450 yrs. MORELIA, Capital of Michoacán



(1990.10.16) 1991.2.26: First perceptions of AMERICA's embrace

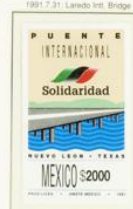


(1991.4.25) 1991.5.15



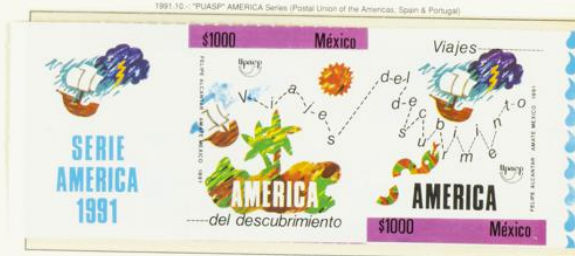
500 yrs. Mining in Mexico

1991.7.31: Laredo Int. Bridge



Spanning the Rio Grande

1991.10 - "PUASP" AMERICA Series (Postal Union of the Americas, Spain & Portugal)



The explorers' 1492 sailing course

N.B.: All stamps printed by "AMATE MEXICO" and "Rouletted" 6%.

Mexico

1970

Neuer Druck - Nuevas impresiones - New printings



Mexico

1953/63



W.12



Ma.12



1954



Mexico

1947/50

W. 11

M. 11



LEUCHTTURM